

PREE Laboratories - South  
545 SW 2nd St, #202, Corvallis, OR 97333  
541-257-5002 / OLCC 010-10087092BDA / www.PREElab.com

**Scotty 2 Hotty**  
*Legacy Grower's Guild LLC*  
(Info Only)

**Confident Cannabis ID:**

**Sample ID:** C242012-12

**Matrix:** Hemp

**METRC Batch #:**

**Sampling Method/SOP:** FSOP #101

**Date Sampled:** 12/3/2024 9:00:00AM

**Date Accepted:** 12/03/24

**Harvest/Process Lot ID:**

**Batch ID:**

**Batch Size (g):**

**Unit for Sale:**

**Harvest/Production Date:**

**Cannabinoid Analysis**

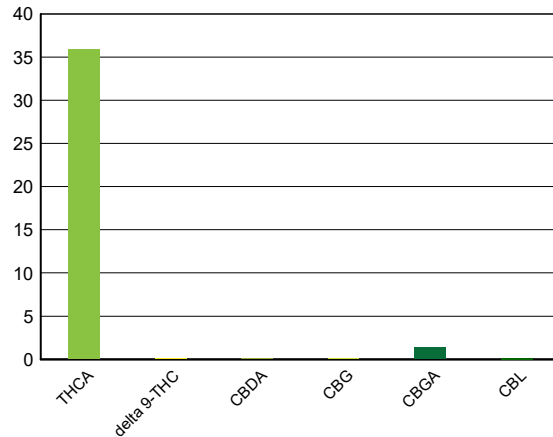
**FOR INFORMATIONAL USE ONLY - NOT FOR REGULATORY PURPOSES**

Date/Time Extracted: 12/03/24 14:21  
Date/Time Analyzed: 12/03/24 21:29

Analysis Method/SOP: LSOP #303

Cannabinoids	LOQ(%)	mg/g	% weight	Cannabinoid Profile
<b>Total THC</b> ((THCA*0.877)+Δ9THC)		<b>314.70</b>	<b>31.470</b>	
<b>Total CBD</b> ((CBDA*0.877)+CBD)		<b>&lt; LOQ</b>	<b>&lt; LOQ</b>	

THCA	0.15000	358.84	35.884
delta 9-THC	0.050000	0.88	0.088453
delta 8-THC	0.15000	< LOQ	< LOQ
THCV	0.15000	< LOQ	< LOQ
CBGA	0.15000	13.70	1.3697
CBDA	0.15000	< LOQ	< LOQ
CBD	0.15000	< LOQ	< LOQ
CBDV	0.15000	< LOQ	< LOQ
CBN	0.15000	< LOQ	< LOQ
CBG	0.15000	< LOQ	< LOQ
CBC	0.15000	< LOQ	< LOQ
CBDV-A	0.15000	< LOQ	< LOQ
CBL	0.15000	< LOQ	< LOQ
Sum of tested Cannabinoids	0.15000	372.53	37.253



**Moisture Content**

Date/Time Analyzed: 12/03/24 04:20  
Analysis Method/SOP: LSOP #301

**Moisture: 8.820 %**

"Total THC" and "Total CBD" are calculated values and are an Oregon reporting requirement (OAR 333-064-0100). For Cannabinoid analysis, only delta 9-THC, delta 8-THC, THCA, CBD and CBDA are ORELAP accredited analytes. Cannabinoid values reported for plant matter are dry weight corrected; Oregon Water Activity action level is 0.65Aw and Oregon Moisture Content action level is 15%. Samples above limit will be highlighted RED; FD = Field Duplicate; LOQ = Limit of Quantitation.

Carson Newkirk  
Laboratory Manager - 12/5/2024

PREE Laboratories - South  
545 SW 2nd St, #202, Corvallis, OR 97333  
541-257-5002 / OLCC 010-10087092BDA / www.PREElab.com

**Quality Control**

**Batch: C24L029 - LSOP #303 Cannabinoid Quantification**

<b>Blank(C24L029-BLK1)</b>			Extracted: 12/03/24 14:21			Analyzed: 12/03/24 18:06			
Analyte	Result	LOQ	Recovery Limits	Notes	Analyte	Result	LOQ	Recovery Limits	Notes
CBDV-A	< LOQ	0.15000 (%)	< LOQ		CBDV	< LOQ	0.15000 (%)	< LOQ	
CBDA	< LOQ	0.15000 (%)	< LOQ		CBGA	< LOQ	0.15000 (%)	< LOQ	
CBG	< LOQ	0.15000 (%)	< LOQ		CBD	< LOQ	0.15000 (%)	< LOQ	
THCV	< LOQ	0.15000 (%)	< LOQ		CBN	< LOQ	0.15000 (%)	< LOQ	
delta 8-THC	< LOQ	0.15000 (%)	< LOQ		delta 9-THC	< LOQ	0.050000 (%)	< LOQ	
CBL	< LOQ	0.15000 (%)	< LOQ		CBC	< LOQ	0.15000 (%)	< LOQ	
THCA	< LOQ	0.15000 (%)	< LOQ		Sum of tested Cannabinc	< LOQ	0.15000 (%)	< LOQ	

<b>LCS(C24L029-BS1)</b>			Extracted: 12/03/24 14:21			Analyzed: 12/03/24 18:22			
Analyte	% Recovery	LOQ	Recovery Limits	Notes	Analyte	% Recovery	LOQ	Recovery Limits	Notes
CBDA	101	0.15000 (%)	90-110		CBD	102	0.15000 (%)	90-110	
delta 8-THC	100	0.15000 (%)	90-110		delta 9-THC	101	0.050000 (%)	90-110	
THCA	101	0.15000 (%)	90-110						



Carson Newkirk  
Laboratory Manager - 12/5/2024