

PRE Laboratories - South
545 SW 2nd St, #202, Corvallis, OR 97333
541-257-5002 / OLCC 010-10087092BDA / www.PRElab.com

Garlic Sunrise
Legacy Grower's Guild LLC
(Info Only)

Confident Cannabis ID:

Sample ID: C242012-05

Matrix: Hemp

METRC Batch #:

Sampling Method/SOP: FSOP #101

Date Sampled: 12/3/2024 9:00:00AM

Date Accepted: 12/03/24

Harvest/Process Lot ID:

Batch ID:

Batch Size (g):

Unit for Sale:

Harvest/Production Date:

Cannabinoid Analysis

FOR INFORMATIONAL USE ONLY - NOT FOR REGULATORY PURPOSES

Date/Time Extracted: 12/03/24 14:21

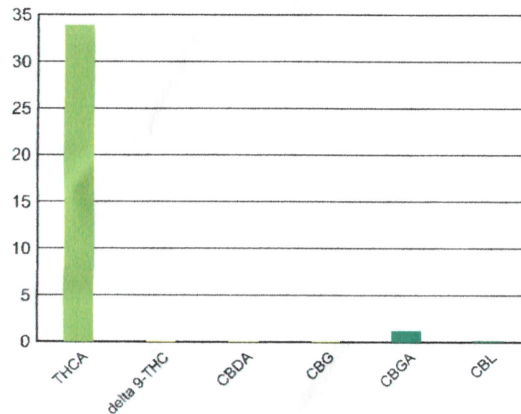
Analysis Method/SOP: LSOP #303

Date/Time Analyzed: 12/03/24 19:40

| Cannabinoids | LOQ(%) | mg/g | % weight |
|---------------------------------------|--------|-----------------|-----------------|
| Total THC ((THCA*0.877)+Δ9THC) | | 297.12 | 29.712 |
| Total CBD ((CBDA*0.877)+CBD) | | < LOQ | < LOQ |

Cannabinoid Profile

| | | | |
|-------------------------------|----------|--------|---------|
| THCA | 0.15000 | 338.79 | 33.879 |
| delta 9-THC | 0.050000 | 1.02 | 0.10214 |
| delta 8-THC | 0.15000 | < LOQ | < LOQ |
| THCV | 0.15000 | < LOQ | < LOQ |
| CBGA | 0.15000 | 12.39 | 1.2394 |
| CBDA | 0.15000 | < LOQ | < LOQ |
| CBD | 0.15000 | < LOQ | < LOQ |
| CBDV | 0.15000 | < LOQ | < LOQ |
| CBN | 0.15000 | < LOQ | < LOQ |
| CBG | 0.15000 | < LOQ | < LOQ |
| CBC | 0.15000 | < LOQ | < LOQ |
| CBDV-A | 0.15000 | < LOQ | < LOQ |
| CBL | 0.15000 | < LOQ | < LOQ |
| Sum of tested Cannabinoids | 0.15000 | 351.18 | 35.118 |



Moisture Content

Date/Time Analyzed: 12/03/24 04:20
Analysis Method/SOP: LSOP #301

Moisture: 7.850 %

"Total THC" and "Total CBD" are calculated values and are an Oregon reporting requirement (OAR 333-064-0100). For Cannabinoid analysis, only delta 9-THC, delta 8-THC, THCA, CBD and CBDA are ORELAP accredited analytes. Cannabinoid values reported for plant matter are dry weight corrected; Oregon Water Activity action level is 0.65Aw and Oregon Moisture Content action level is 15%. Samples above limit will be highlighted RED; FD = Field Duplicate; LOQ = Limit of Quantitation.

Carson Newkirk
Laboratory Manager - 12/5/2024