

PREE Laboratories - South
545 SW 2nd St, #202, Corvallis, OR 97333
541-257-5002 / OLCC 010-10087092BDA / www.PREElab.com

Sugar Cane
Legacy Grower's Guild LLC
(Info Only)

Confident Cannabis ID:
Sample ID: C250203-02
Matrix: Useable Marijuana
METRC Batch #:
Sampling Method/SOP: FSOP #101
Date Sampled: NA
Date Accepted: 02/10/25
Harvest/Process Lot ID:

Batch ID:
Batch Size (g):
Unit for Sale:
Harvest/Production Date:

Cannabinoid Analysis

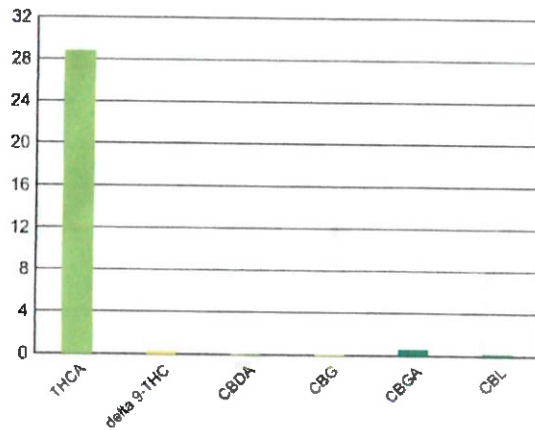
FOR INFORMATIONAL USE ONLY - NOT FOR REGULATORY PURPOSES

Date/Time Extracted: 02/13/25 15:25
Date/Time Analyzed: 02/14/25 15:45

Analysis Method/SOP: LSOP #303

Cannabinoids	LOQ(%)	mg/g	% weight
Total THC ((THCA*0.877)-...9THC)		255.09	25.509
Total CBD ((CBDA*0.877)+CBD)		< LOQ	< LOQ
THCA	0.15000	287.77	28.777
delta 9-THC	0.15000	2.71	0.27127
delta 8-THC	0.15000	< LOQ	< LOQ
THCV	0.15000	< LOQ	< LOQ
CBGA	0.15000	6.24	0.62423
CBDA	0.15000	< LOQ	< LOQ
CBD	0.15000	< LOQ	< LOQ
CBDV	0.15000	< LOQ	< LOQ
CBN	0.15000	< LOQ	< LOQ
CBG	0.15000	< LOQ	< LOQ
CBC	0.15000	< LOQ	< LOQ
CBDV-A	0.15000	< LOQ	< LOQ
CBL	0.15000	2.26	0.22589
Sum of tested Cannabinoids	0.15000	299.21	29.921

Cannabinoid Profile



Moisture Content

Date/Time Analyzed: 02/13/25 12:30
Analysis Method/SOP: LSOP #301

Moisture: 8.700 %

Total THC and *Total CBD* are calculated values and are an Oregon reporting requirement (OAR 333-064-0100). For Cannabinoid analysis only delta 9-THC, delta 8-THC, THCA, CBD and CBDA are ORELAP accredited analytes. Cannabinoid values reported for plant matter are dry weight corrected; Oregon Water Activity action level is 0.85Aw and Oregon Moisture Content action level is 15%. Samples above limit will be highlighted RED; FD - Field Duplicate; LOQ - Limit of Quantitation.

Carson Newkirk
Carson Newkirk
Laboratory Manager - 2/17/2025


PRE Laboratories - South
545 SW 2nd St, #202, Corvallis, OR 97333
541-257-5002 / OLCC 010-10087092BDA / www.PRElab.com

Quality Control

Batch: C25B096 - LSOP #303 Cannabinoid Quantification

Blank(C25B096-BLK1)			Extracted: 02/13/25 15:25			Analyzed: 02/14/25 12:02			
Analyte	Result	LOQ	Recovery Limits	Notes	Analyte	Result	LOQ	Recovery Limits	Notes
CBDV-A	< LOQ	0.15000 (%)	< LOQ		CBDV	< LOQ	0.15000 (%)	< LOQ	
CBDA	< LOQ	0.15000 (%)	< LOQ		CBGA	< LOQ	0.15000 (%)	< LOQ	
CBG	< LOQ	0.15000 (%)	< LOQ		CBD	< LOQ	0.15000 (%)	< LOQ	
THCV	< LOQ	0.15000 (%)	< LOQ		CBN	< LOQ	0.15000 (%)	< LOQ	
delta 8-THC	< LOQ	0.15000 (%)	< LOQ		delta 9-THC	< LOQ	0.15000 (%)	< LOQ	
CBL	< LOQ	0.15000 (%)	< LOQ		CBC	< LOQ	0.15000 (%)	< LOQ	
THCA	< LOQ	0.15000 (%)	< LOQ		Sum of tested Cannabin	< LOQ	0.15000 (%)	< LOQ	

LCS(C25B096-BS1)			Extracted: 02/13/25 15:25			Analyzed: 02/14/25 12:17			
Analyte	% Recovery	LOQ	Recovery Limits	Notes	Analyte	% Recovery	LOQ	Recovery Limits	Notes
CBDA	109	0.15000 (%)	90-110		CBD	109	0.15000 (%)	90-110	
delta 8-THC	95.5	0.15000 (%)	90-110		delta 9-THC	101	0.15000 (%)	90-110	
THCA	106	0.15000 (%)	90-110						

 Carson Newkirk
Laboratory Manager - 2/17/2025

This report shall not be reproduced, unless in its entirety without the approval from PRE Laboratories LLC. Test results are confidential unless explicitly waived otherwise. All QC samples meet acceptance criteria of the method, data available upon request. The results relate only to the material or product analyzed for the sample included on this report.