

PREE Laboratories - South  
545 SW 2nd St, #202, Corvallis, OR 97333  
541-257-5002 / OLCC 010-10087092BDA / www.PREElab.com

**Eucalyptus Haze**  
**Legacy Grower's Guild LLC**  
*(Info Only)*

**Confident Cannabis ID:**

**Sample ID:** C242012-08

**Matrix:** Hemp

**METRC Batch #:**

**Sampling Method/SOP:** FSOP #101

**Date Sampled:** 12/3/2024 9:00:00AM

**Date Accepted:** 12/03/24

**Harvest/Process Lot ID:**

**Batch ID:**

**Batch Size (g):**

**Unit for Sale:**

**Harvest/Production Date:**

**Cannabinoid Analysis**

**FOR INFORMATIONAL USE ONLY - NOT FOR REGULATORY PURPOSES**

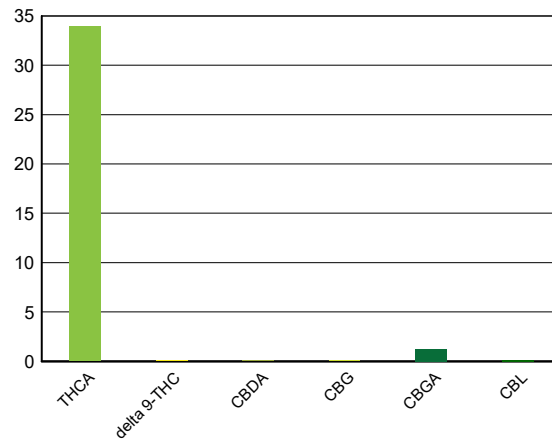
Date/Time Extracted: 12/03/24 14:21

Analysis Method/SOP: LSOP #303

Date/Time Analyzed: 12/03/24 20:27

Cannabinoids	LOQ(%)	mg/g	% weight	Cannabinoid Profile
<b>Total THC</b> ((THCA*0.877)+Δ9THC)		<b>297.40</b>	<b>29.740</b>	
<b>Total CBD</b> ((CBDA*0.877)+CBD)		<b>&lt; LOQ</b>	<b>&lt; LOQ</b>	

THCA	0.15000	339.12	33.912
delta 9-THC	0.050000	0.97	0.096869
delta 8-THC	0.15000	< LOQ	< LOQ
THCV	0.15000	< LOQ	< LOQ
CBGA	0.15000	12.80	1.2802
CBDA	0.15000	< LOQ	< LOQ
CBD	0.15000	< LOQ	< LOQ
CBDV	0.15000	< LOQ	< LOQ
CBN	0.15000	< LOQ	< LOQ
CBG	0.15000	< LOQ	< LOQ
CBC	0.15000	< LOQ	< LOQ
CBDV-A	0.15000	< LOQ	< LOQ
CBL	0.15000	< LOQ	< LOQ
Sum of tested Cannabinoids	0.15000	351.92	35.192



**Moisture Content**

Date/Time Analyzed: 12/03/24 04:20  
Analysis Method/SOP: LSOP #301

**Moisture: 6.060 %**

"Total THC" and "Total CBD" are calculated values and are an Oregon reporting requirement (OAR 333-064-0100). For Cannabinoid analysis, only delta 9-THC, delta 8-THC, THCA, CBD and CBDA are ORELAP accredited analytes. Cannabinoid values reported for plant matter are dry weight corrected; Oregon Water Activity action level is 0.65Aw and Oregon Moisture Content action level is 15%. Samples above limit will be highlighted RED; FD = Field Duplicate; LOQ = Limit of Quantitation.

Carson Newkirk  
Laboratory Manager - 12/5/2024

Page 1 of 2

PREE Laboratories - South  
545 SW 2nd St, #202, Corvallis, OR 97333  
541-257-5002 / OLCC 010-10087092BDA / www.PREElab.com

## Quality Control

**Batch: C24L029 - LSOP #303 Cannabinoid Quantification**

Blank(C24L029-BLK1)			Extracted: 12/03/24 14:21			Analyzed: 12/03/24 18:06			
Analyte	Result	LOQ	Recovery Limits	Notes	Analyte	Result	LOQ	Recovery Limits	Notes
CBDV-A	< LOQ	0.15000 (%)	< LOQ		CBDV	< LOQ	0.15000 (%)	< LOQ	
CBDA	< LOQ	0.15000 (%)	< LOQ		CBGA	< LOQ	0.15000 (%)	< LOQ	
CBG	< LOQ	0.15000 (%)	< LOQ		CBD	< LOQ	0.15000 (%)	< LOQ	
THCV	< LOQ	0.15000 (%)	< LOQ		CBN	< LOQ	0.15000 (%)	< LOQ	
delta 8-THC	< LOQ	0.15000 (%)	< LOQ		delta 9-THC	< LOQ	0.050000 (%)	< LOQ	
CBL	< LOQ	0.15000 (%)	< LOQ		CBC	< LOQ	0.15000 (%)	< LOQ	
THCA	< LOQ	0.15000 (%)	< LOQ		Sum of tested Cannabinoids	< LOQ	0.15000 (%)	< LOQ	

LCS(C24L029-BS1)			Extracted: 12/03/24 14:21			Analyzed: 12/03/24 18:22			
Analyte	% Recovery	LOQ	Recovery Limits	Notes	Analyte	% Recovery	LOQ	Recovery Limits	Notes
CBDA	101	0.15000 (%)	90-110		CBD	102	0.15000 (%)	90-110	
delta 8-THC	100	0.15000 (%)	90-110		delta 9-THC	101	0.050000 (%)	90-110	
THCA	101	0.15000 (%)	90-110						



Carson Newkirk  
Laboratory Manager - 12/5/2024